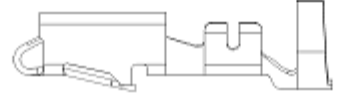




WAYTEK, INC.
 800-328-2724
 www.waytekwire.com
 sales@waytekwire.com

SYMBOL DEFINITION		MOQING SYMBOLS	
A DIMENSION WITHOUT AN INSPECTION REPORT SYMBOL (I) DOES NOT REQUIRE INSPECTION, IT MAY BE CONTROLLED ON THE INDIVIDUAL COMPONENT DRAWING.	TOTAL NO OF INSPECTIONS RECEIVED	4 0 3	
	LAST NO. USED	10	

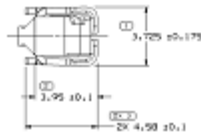
REV	DATE	BY	CHKD	DESCRIPTION
1	11/10/95	JL	JL	ISSUED BY WAYTEK ALL ACTIVE PARTS SHOULD BE APPROVED
2	11/10/95	JL	JL	REVISIONS LISTED
3	11/10/95	JL	JL	ALL ACTIVE PARTS - ADD WIRING ID
4	11/10/95	JL	JL	ALL ACTIVE PARTS - REVISED WFL SPEC 4
5	11/10/95	JL	JL	120 PLUG - APPROVED BY APPROVED
6	11/10/95	JL	JL	120 PLUG - APPROVED BY APPROVED
7	11/10/95	JL	JL	120 PLUG - APPROVED BY APPROVED
8	11/10/95	JL	JL	120 PLUG - APPROVED BY APPROVED
9	11/10/95	JL	JL	120 PLUG - APPROVED BY APPROVED
10	11/10/95	JL	JL	120 PLUG - APPROVED BY APPROVED



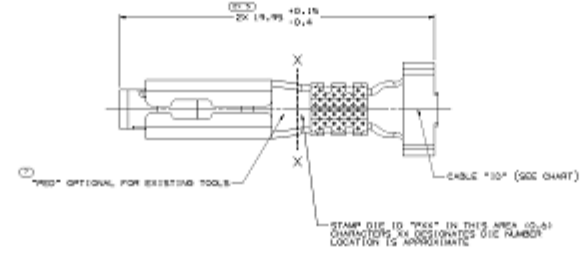
TYPE 102
 SAME AS TYPE 101
 EXCEPT AS SHOWN



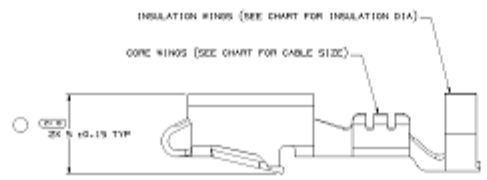
TYPE 103
 SAME AS TYPE 101
 EXCEPT AS SHOWN



VIEW TO X-X



VIEW TO X-X



TYPE 101



VIEW SCALE DOES NOT REFLECT ACTUAL PART SIZE

- NOTES
- UNLESS OTHERWISE SPECIFIED AND/OR INDICATED DIMENSIONS ARE TO FACE OF VIEW SHOWN AND AUTOMATICALLY ROUNDED BY EQUIPMENT FOR INSPECTION (SEE MATH MODEL FOR PRECISE DIMENSIONS). FOR ALL OTHER DIMENSIONS NOT SHOWN BUT REQUIRED FOR TOOL BUILD, SEE MATH MODEL FOR PRECISE TOOL PATH DATA.
 - R 0.4 PERMISSIBLE ON ALL "SHARP" CORNERS
 - RECOMMENDED MATING BLADE 2.0 X 0.01.
 - TERMINALS TO GRIND AROUND AND RETAIN CAVITY SEAL, IDENTIFIED OR EQUIVALENT.
 - "DNK" INDICATES "D" PLUG LAST TWO DIGITS OF MAKE SERIES NUMBER (POL, POS, POS, ETC.).
 - DO NOT PROBE, TEST OR OTHERWISE CONTACT THE INTERIOR REGION (THE SPINUS OR ANY MOVING PARTS OF THIS TERMINAL, SEEING DAMAGE CAN OCCUR, COMPROMISING THE PERFORMANCE OF THE ELECTRICAL INTERFACE.

START NUMBER	STATUS	REV	DATE	BY	CHKD	DESCRIPTION	STATUS	PLATING	NOTES	STATUS	DATE	BY	CHKD
01000	0		11/10/95	JL	JL	01000-001	0						
01000	0		11/10/95	JL	JL	01000-002	0						
01000	0		11/10/95	JL	JL	01000-003	0						
01000	0		11/10/95	JL	JL	01000-004	0						
01000	0		11/10/95	JL	JL	01000-005	0						
01000	0		11/10/95	JL	JL	01000-006	0						
01000	0		11/10/95	JL	JL	01000-007	0						
01000	0		11/10/95	JL	JL	01000-008	0						
01000	0		11/10/95	JL	JL	01000-009	0						
01000	0		11/10/95	JL	JL	01000-010	0						
01000	0		11/10/95	JL	JL	01000-011	0						
01000	0		11/10/95	JL	JL	01000-012	0						
01000	0		11/10/95	JL	JL	01000-013	0						
01000	0		11/10/95	JL	JL	01000-014	0						
01000	0		11/10/95	JL	JL	01000-015	0						
01000	0		11/10/95	JL	JL	01000-016	0						
01000	0		11/10/95	JL	JL	01000-017	0						
01000	0		11/10/95	JL	JL	01000-018	0						
01000	0		11/10/95	JL	JL	01000-019	0						
01000	0		11/10/95	JL	JL	01000-020	0						

DELPHI
 MULTI-PIN ELECTRICAL CONNECTOR ASSEMBLY
 PART 12089195

DATE: 11/10/95
 DRAWN BY: JL
 CHECKED BY: JL
 APPROVED BY: JL

THIS DRAWING IS THE PROPERTY OF DELPHI CORPORATION. IT IS TO BE USED ONLY FOR THE PURPOSES SPECIFIED HEREON. IT IS NOT TO BE REPRODUCED OR TRANSMITTED IN ANY FORM OR BY ANY MEANS, ELECTRONIC OR MECHANICAL, INCLUDING PHOTOCOPYING, RECORDING, OR BY ANY INFORMATION STORAGE AND RETRIEVAL SYSTEM.

12089195