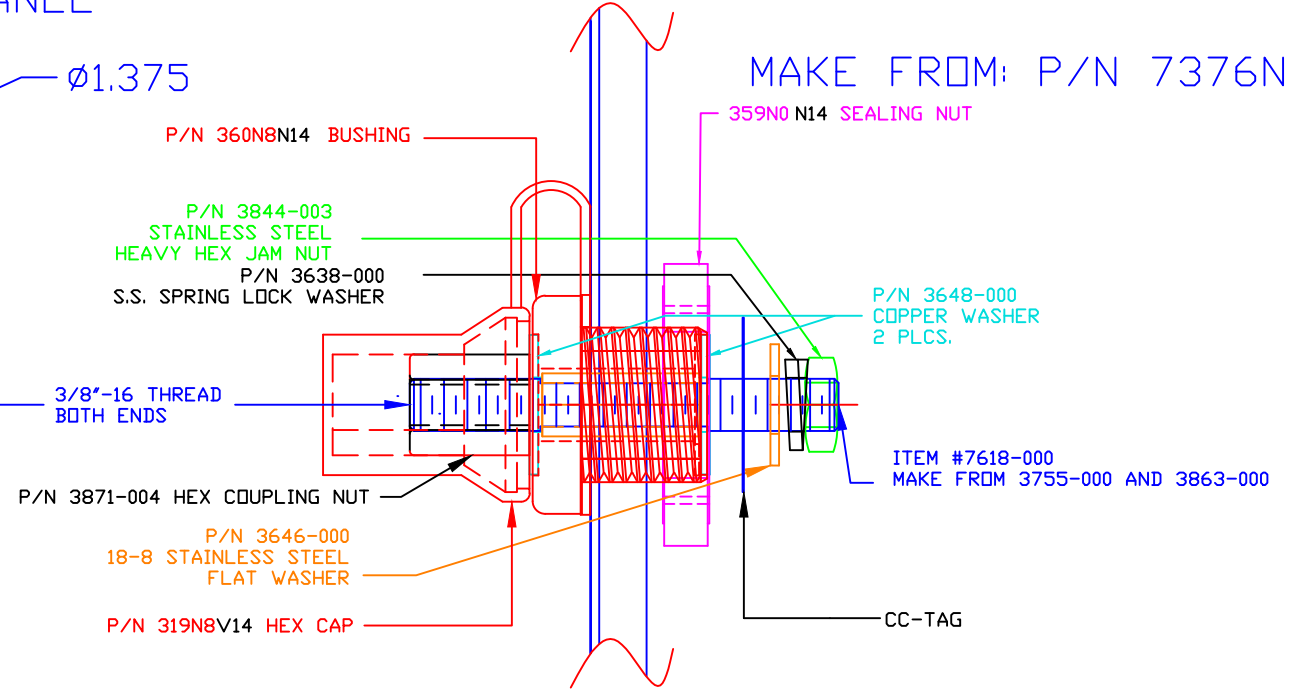
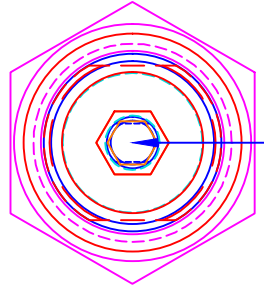
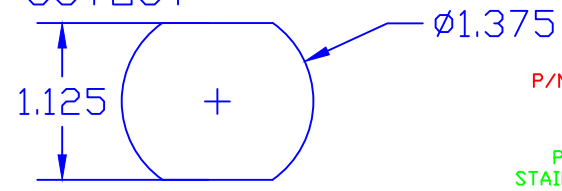


LTR.	REVISIONS	DATE	INT.
△	ADDED TORQUE TAG	29DEC15	RAS

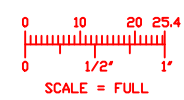
USE GREENLEE
PUNCH ASSEMBLY
#60098 FOR PANEL
CUTOUT



MAXIMUM FASTENER TORQUES:
JAM NUTS: 15 FT./LBS. (180 IN./LBS.)
SEALING NUT: 10 FT./LBS. (120 IN./LBS.)

CURRENT CARRYING CAPACITY: 350 AMPS @ 12VDC

BASE MATERIAL: GLASS-REINFORCED NYLON
BASE MATERIAL U.L. RATING: 94 HB
VTE MATERIAL P/N: 111210514



TOLERANCE UNLESS OTHERWISE SPECIFIED: MOLDED PRODUCTS ONLY: ±.030"/±0.8mm HARDWARE ITEMS: ±0.010"/±0.25mm RADIAL DIAMETERS TO BE MEASURED OVER MANDRELS, RING GAGES OR PIN GAGES OF SUITABLE SIZE			
REF: *****	DATE: 15OCT15	DRN BY: RAS	WEIGHT: *****
TITLE: POWER BUSHING JUMPER COPPER CORE 350 AMP			SCALE:
MATERIAL:			
COLOR: *****	DRG CLASS *****		