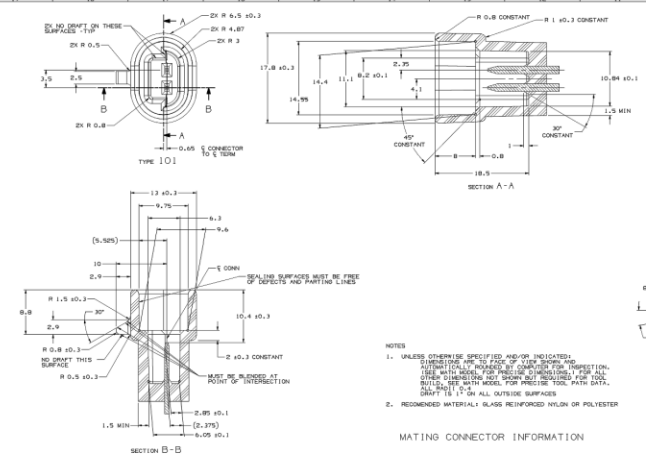
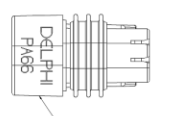
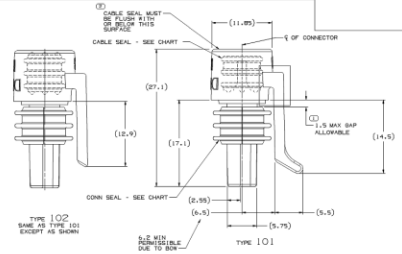


MATERIAL SPECIFICATIONS

RECOMMENDED
 BASE METAL - CD-210, EXTRA SPRING TEMPER
 TIN PLATING - WHEN APPLICABLE TO 25% MAX CONTINUOUS USAGE!
 SOLDER SOLDER 90/100 OR 60/40 EUTECTIC ALLOY
 LEAD OF PLATING TYPES OTHER THAN RECOMMENDED
 MUST BE APPROVED BY DELPHI PACKING ELECTRICAL SYSTEMS ENGINEERING.

MINIMUMS
 ELECTRICAL CONDUCTIVITY - SEE THIS AT 25°C. USE OF A
 BY INSULATED ELECTRICAL MATERIALS ENGINEERING.
 TENSILE STRENGTH - 430 - 480 MPa
 UNDERPLATING FOR TIN PLATING - FOR BASE MATERIALS CONTAINING 30% OR MORE ZINC,
 AN UNDERPLATE OF COPPER 0.0038 IN (100 μm) MINIMUM THICKNESS IS REQUIRED.
 PROTECTIVE LUBRICANT - ANY PROTECTIVE LUBRICANT REMAINING ON TERMINALS
 MUST BE REMOVED BY WASHING WITH ALCOHOL. PERFORMANCE REQUIREMENTS
 MUST BE APPROVED BY DELPHI PACKING ELECTRICAL SYSTEMS ENGINEERING.

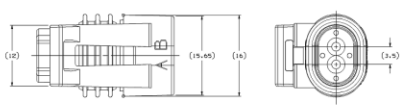
MATING BLADE INFORMATION



MATING CONNECTOR INFORMATION

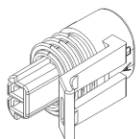
- NOTES
 1. UNLESS OTHERWISE SPECIFIED AND/OR INDICATED, DIMENSIONS SHALL BE IN MILLIMETERS EXCEPT AS INDICATED.
 DIMENSIONS IN PARENTHESES ARE INDICATED FOR INFORMATION ONLY AND ARE NOT TO BE USED FOR DIMENSIONING OR INSPECTION.
 DIMENSIONS IN PARENTHESES ARE NOT TO BE USED FOR DIMENSIONING OR INSPECTION.
 DIMENSIONS IN PARENTHESES ARE NOT TO BE USED FOR DIMENSIONING OR INSPECTION.
 DIMENSIONS IN PARENTHESES ARE NOT TO BE USED FOR DIMENSIONING OR INSPECTION.
 DIMENSIONS IN PARENTHESES ARE NOT TO BE USED FOR DIMENSIONING OR INSPECTION.

OPTIONAL CONSTRUCTION



PART NO	REV	DATE	BY	CHK	DESCRIPTION	APP	REMARKS
2162269	1	12/11/10	CABLE SEAL AND COLOR
...

SYMBOL	DEFINITION	TOTAL NO. OF INSPECTIONS REQUIRED	NO. MISSING SYMBOLS
...	...	2	2



- NOTES
 1. UNLESS OTHERWISE SPECIFIED AND/OR INDICATED, DIMENSIONS SHALL BE IN MILLIMETERS EXCEPT AS INDICATED.
 DIMENSIONS IN PARENTHESES ARE INDICATED FOR INFORMATION ONLY AND ARE NOT TO BE USED FOR DIMENSIONING OR INSPECTION.
 DIMENSIONS IN PARENTHESES ARE NOT TO BE USED FOR DIMENSIONING OR INSPECTION.
 DIMENSIONS IN PARENTHESES ARE NOT TO BE USED FOR DIMENSIONING OR INSPECTION.
 DIMENSIONS IN PARENTHESES ARE NOT TO BE USED FOR DIMENSIONING OR INSPECTION.
 DIMENSIONS IN PARENTHESES ARE NOT TO BE USED FOR DIMENSIONING OR INSPECTION.
 DIMENSIONS IN PARENTHESES ARE NOT TO BE USED FOR DIMENSIONING OR INSPECTION.

REV	DATE	BY	CHK	DESCRIPTION
1	12/11/10

DELPHI
 CORPORATION
 12162269
 DATE: 12/11/10
 DRAWN BY: ...
 CHECKED BY: ...
 ENGINEER: ...
 MANAGER: ...
 TARI FOR CON. F-WP 362.5.D
 12162269

passat