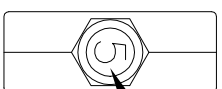


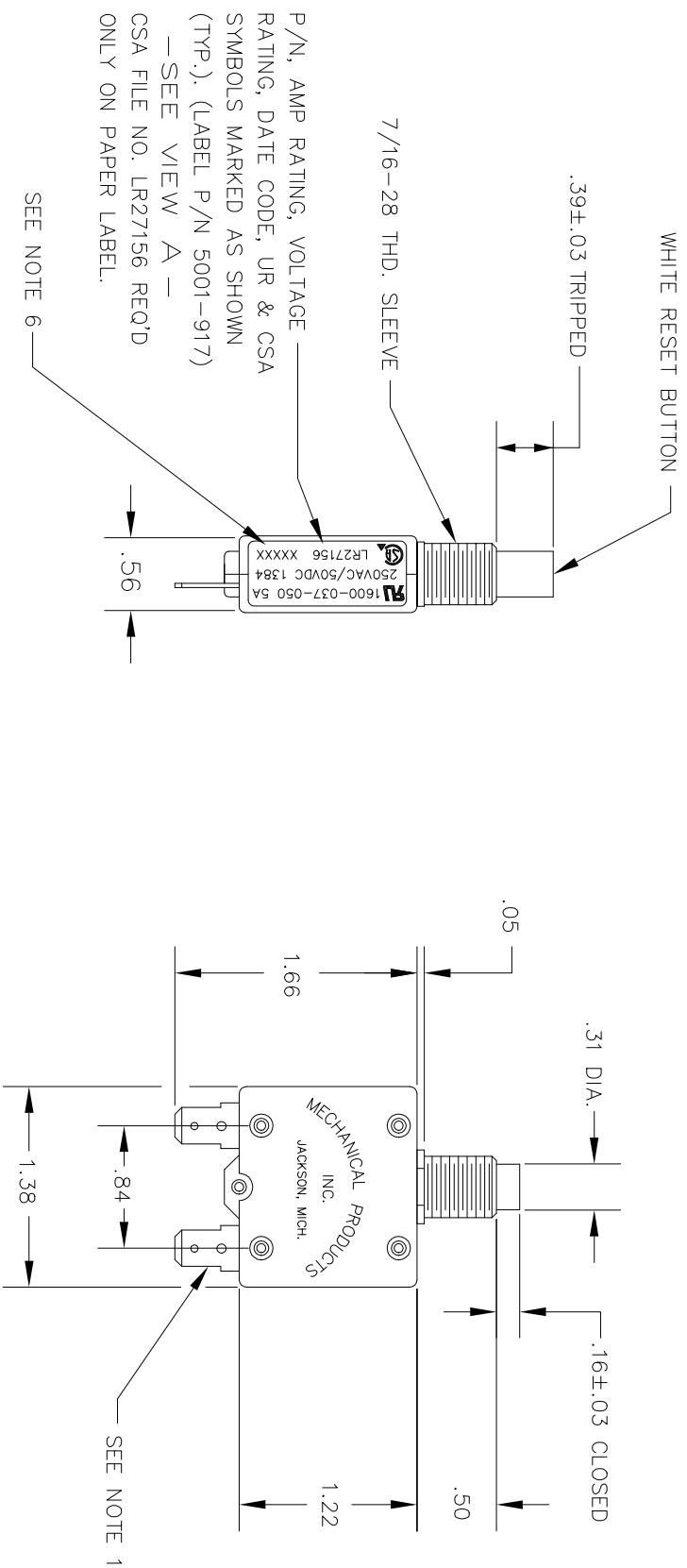
NOTES:

1. TERMINALS ARE .250 WIDE X .032 THICK QUICK CONNECT TYPE IN ACCORDANCE WITH N.E.M.A. STD. DC-2-1976.
2. FOR AVAILABLE MOUNTING HARDWARE SEE D/N 1600-800.
3. FOR AVAILABLE AMP RATINGS SEE D/N 1600-801.
4. FOR VARIATION CHART SEE D/N 1600-802
5. FOR CALIBRATION DATA SEE D/N 1600-701.
6. FOR PLANT DATA SEE D/N 1600-808.



BLACK AMP STAMP ORIENTED AS SHOWN (TYP.)

REVISION		ECN	DATE	APPROVED
LTR	DESCRIPTION			
P	REDRAWN WITHOUT CHANGE	11850	10/11/07	JA



ALTERNATE LABEL (P/N 5001-915) FOR 26 AMPERE RATING & ABOVE

1600-037-300 30A  
250VAC/50VDC 1384  
XXXXXX

VIEW A

MECHANICAL PROPERTIES		UNLESS OTHERWISE SPECIFIED DIMENSIONS ARE IN INCHES TOLERANCES ON ANGLES		DFTM. M.H.B. 8 / 1 / 07		MECHANICAL PRODUCTS, INC. JACKSON MICHIGAN U. S. A. 49204	
YP		MATERIAL		PROJ. ENG. JA	10/11/07	MANUALLY RECLOSEABLE CIRCUIT PROTECTOR	
TS				DIR. OF ENG.			
EL 2				MFG.			
RA				Q.C.			
BH				SEE ECN FOR ABOVE SIGNATURES			
RH				CONTRACT NO.			
				NEXT ASSY	USED ON		
				APPLICATION			

SCALE FULL WEIGHT EXP. NO. 1600-037

SHEET 1 OF 1