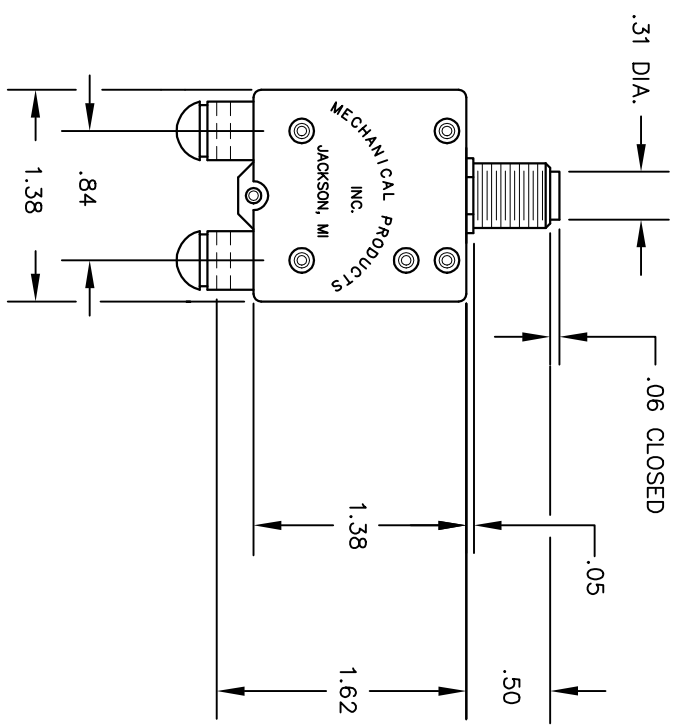
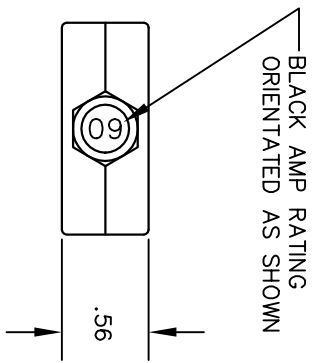
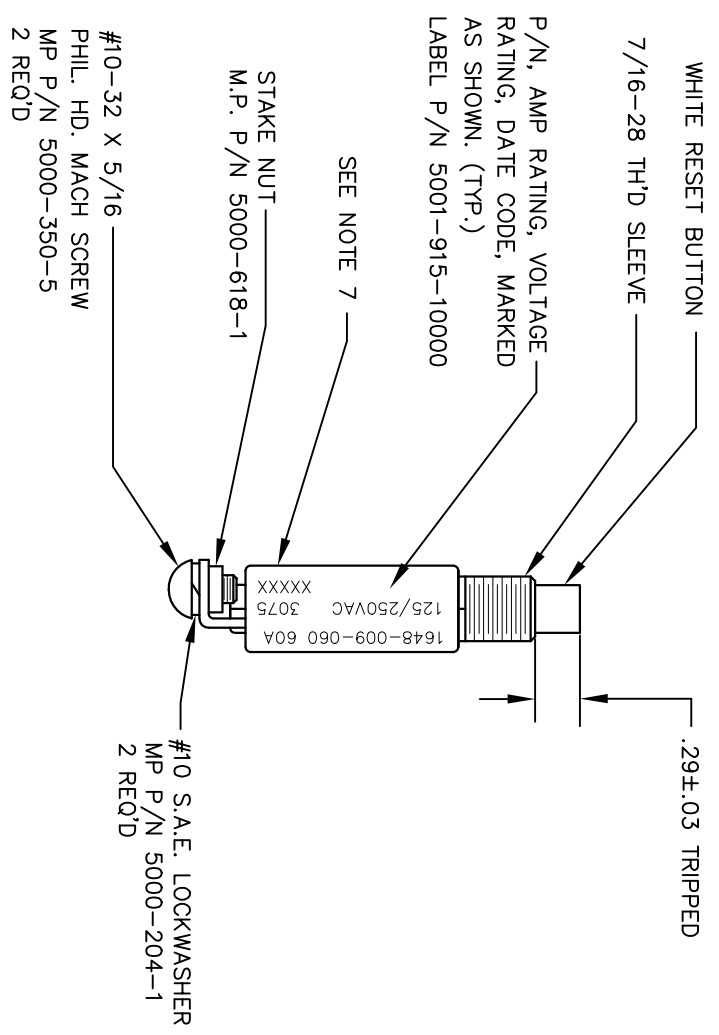


NOTES:

1. FOR AVAILABLE AMP RATINGS SEE D/N 1648-801.
2. FOR AVAILABLE MOUNTING HARDWARE SEE D/N 1600-800.
3. WIRE GAUGE TO BE IN ACCORDANCE WITH NATIONAL ELECTRICAL CODE STANDARDS.
4. FOR CALIBRATION DATA SEE D/N 1648-701.
5. FOR VARIATION CHART SEE D/N 1648-802.
6. AT 77±3°F A MIN. PROTECTOR SHALL NOT TRIP ON LESS THAN RATED CURRENT. A MAX PROTECTOR SHALL TRIP ON 140% OF RATED CURRENT WITHIN ONE HOUR.
7. FOR PLANT DATA SEE D/N 1600-808.



REVISION				
LTR	DESCRIPTION	ENR	DATE	APPROVED
J	REDRAWN W/O CHANGE	12059	3/16/10	JA

MECHANICAL PROPERTIES		UNLESS OTHERWISE SPECIFIED DIMENSIONS ARE IN INCHES TOLERANCES ON		ANGLES		DFTL. MHB		MANUAL RESET CIRCUIT PROTECTOR	
YP		.XX ±	.02	±		10/31/06	MECHANICAL PRODUCTS, INC. JACKSON MICHIGAN U. S. A. 49204		
TS		.XXX ±				3/16/10	EXP. NO. 1648-009		
EL 2							MATERIAL		
RA							SEE ENR FOR ABOVE SIGNATURES		
BH							D.C.		
RH							MFG.		
							DIR. OF ENG.		
							CONTRACT NO.		
							SCALE FULL WEIGHT		
							SHEET 1 OF 1		
							APPLICATION		
							USED ON		
							NEXT ASS'Y		