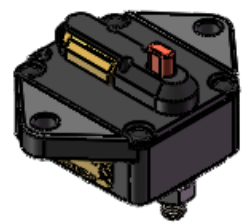
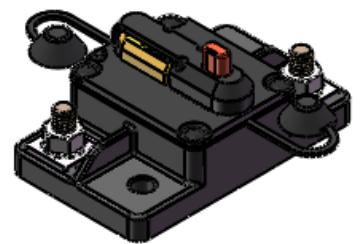
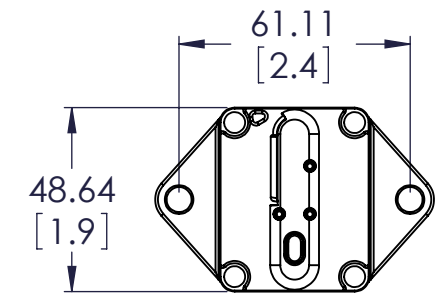
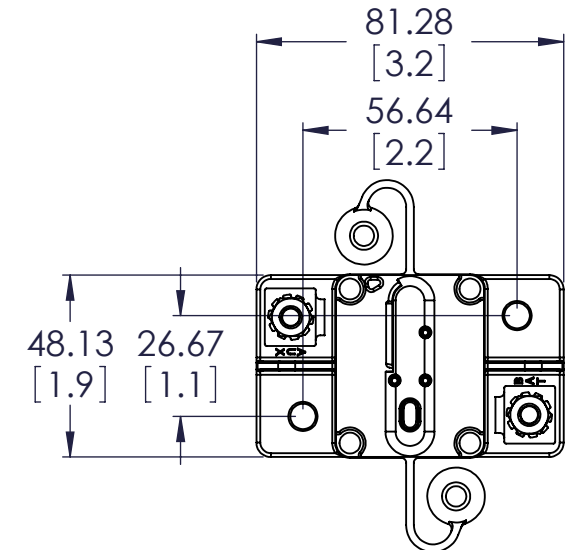
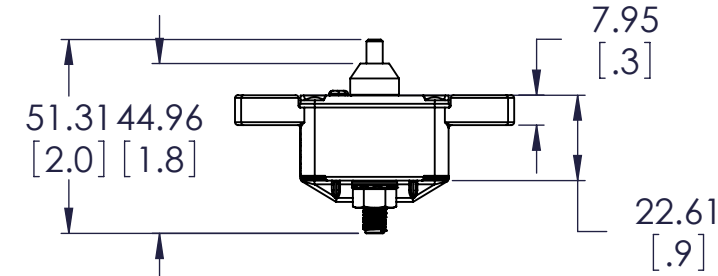
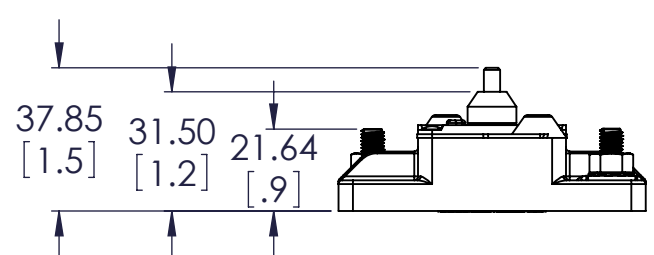


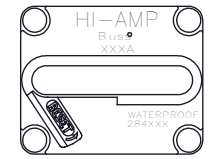
## SURFACE MOUNT

## PANEL MOUNT

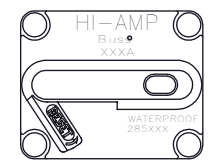


## MARKING

284 SERIES



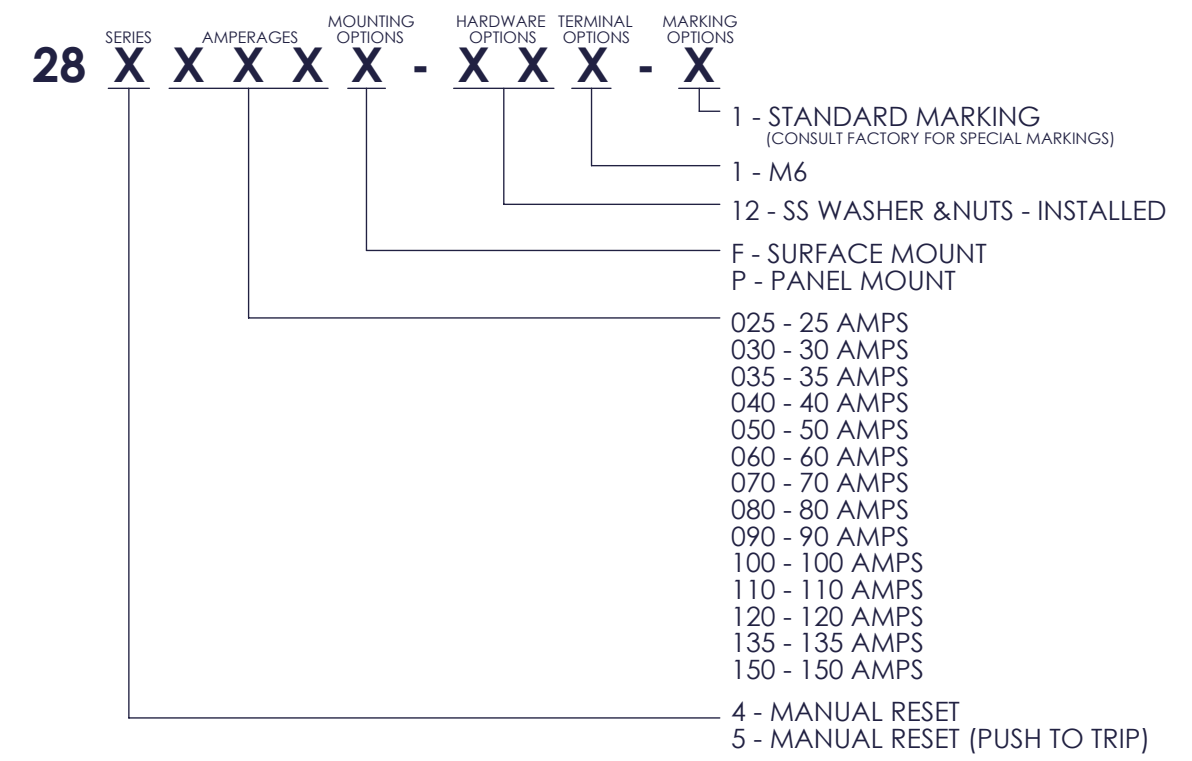
285 SERIES



**CONFIDENTIAL -**  
The information contained in this document is the property of Cooper Industries, Inc. It is not for public disclosure. Possession of the information does not convey any right to loan, sell, or disclose the information. Unauthorized reproduction or use of the information is prohibited. This document is to be returned to Cooper Industries, Inc. upon completion of the purpose for which it is loaned or upon request.

**COPYRIGHT Cooper Industries, Inc.**  
This is an unpublished work. The disclosure of this work is limited to select personnel. Further dissemination or disclosure to the public is PROHIBITED. This unpublished work is protected by Federal Copyright Law and all rights thereunder are reserved by Cooper Industries, Inc.

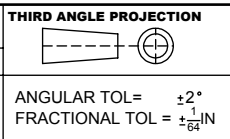
REVISIONS			
REV.	DESCRIPTION	DATE	APPROVED
0	RELEASE TO SALES ECN: BU-U11266 CTH	06-28 2011	



- SPECIFICATIONS:**
- VOLTAGE RATING: 48VDC MAX
  - CURRENT: 25A TO 150A
  - TERMINALS: STAINLESS STEEL M6X1 STUDS
  - MOUNTINGS: 6.6 [0.26] THRU-HOLES
  - TERMINALS TORQUE: 50 IN-LBS [5.6N.M] MAX
  - MOUNTING TORQUE: 50 IN-LBS [5.6N.M] MAX
  - INGRESS PROTECTION RATING: IP67
  - COMPLIANCES: SAE J1625, ABYC E-11, SAE J1171 (IGNITION PROTECTED)



TOLERANCES UNLESS OTHERWISE SPECIFIED	
METRIC (mm)	ENGLISH (in)
1 PL DEC.= .25±	2 PL DEC.= .01±
2 PL DEC.= .13±	3 PL DEC.= .005±



INDICATES INCOMING INSPECTION REQUIRED

INDICATES CRITICAL CHARACTERISTIC (MUST MEET CPK REQUIREMENTS)

Plant Code: J

Design Units: English [Metric]

For change history please consult the Bussmann Engineering Change Notice number listed below.

ECN No

TITLE: HI-AMP CIRCUIT BREAKER

SHEET 1 OF 1

SCALE: 1:1

REVISION VERSION: A

DATE: DATE

DRAWN BY: C. HA

PART NO.: 28XXXXX-XXX-X-SALES

Ref. Name: 28XXXXX-XXX-X-SALES CBT B-Size