

Song Chuan Micro Relays

Waytek Stock No.	Song Chuan P/N	Volt Rating	Contact Action	Amp Rating NO	Amp Rating NC	Terminals & Notes
75720	871-1A-C	12	SPST	35	—	Four terminals†
75721	871-1A-C-R1	12	SPST	35	—	Four terminals†, resistor
75722	871-1A-C-D1	12	SPST	35	—	Four terminals†, diode
75723	871-1C-C	12	SPDT	35	20	Five terminals
75724	871-1C-C-R1	12	SPDT	35	20	Five terminals, resistor
75725	871-1C-C-D1	12	SPDT	35	20	Five terminals, diode

† Can be used with any five way connector



Micro Relay

Features:

- Contact Material: AgSnO alloy
- Contact Voltage Drop⁽¹⁾: Typ. 40mV at 10A
- Insulation Resistance⁽¹⁾: 20MΩ Min. (DC 500V)
- Operating Time⁽¹⁾: 10ms Max.
- Operating Time⁽¹⁾: 10ms Max.
- Dielectric Strength⁽¹⁾: Between open contact, and contact and coil - AC 500V, 50/60Hz 1 min.
- Vibration Resistance: 10 ~ 500Hz 5.0G
- Shock Resistance: Operating extremes - 10G, Damage Limits - 100G
- Life Expectancy: Mechanical - 10,000,000 operations (frequency 18,000 operations/hr.)
- Life Expectancy: Electrical - 100,000 operations (frequency 1,800 operations/hr.)
- Operating Temperature: -40°F~257°F(-40°C ~ 125°C (no freezing))
- Weight: Approx. 20 g

Note: (1) Without switching the load.

»» Ordering Information		871	1A	-	C	-	R1
		1	2		3		4
1)	871 - Basic series designation - Micro Relays						
2)	1A - Single Pole, Normally Open 1C - Single Pole, Double Throw						
3)	C - Flux tight <i>Available by special order: D - dust cover, DF - dust cover/ base holder type available, S - sealed type washable</i>						
4)	Blank - Standard type R1 - Coil parallel with resistor 1/2W for 12V 680 24V 2700 D1 - Coil parallel with diode IN4007 the positive pole on #85 terminal						

Song Chuan Micro Relays

»» Contact Rating

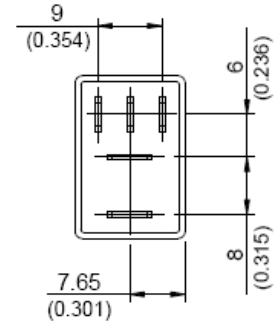
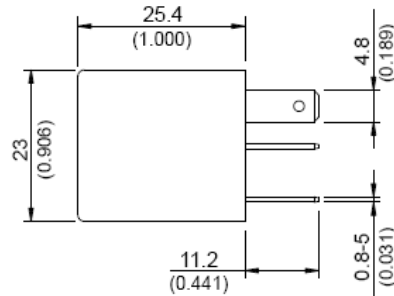
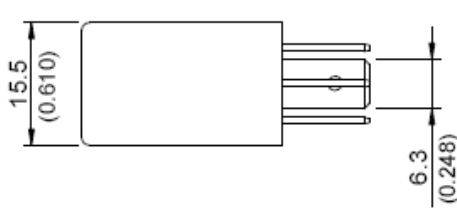
Type	1A	1C
Resistive Load	35A 14VDC 15A 28VDC	NO: 35A 14VDC, 15A 28VDC NC: 20A 14VDC, 10A 28VDC

»» Coil Rating(DC)

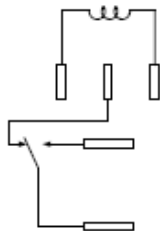
Rated Voltage	Rated Current ±10% at 23°C (mA)	Coil Resistance ±10% at 23°C	Max. Continuous Voltage at 85°C ⁽¹⁾	Pick-up Max. Voltage at 23°C	Drop-out Min Voltage at 23°C	Power Consumption at Rated Voltage
6	187.5	32	133% of rated voltage	60% of rated voltage	10% of rated voltage	Approx. 1.2W
12	97.5	123				
24	49.6	483				

Note: (1) Without switching the load.

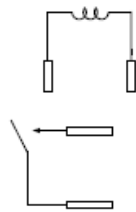
Dimensions:



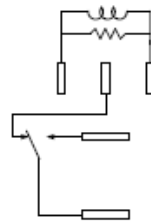
Wiring Diagram for: 75723



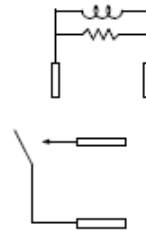
Wiring Diagram for: 75720



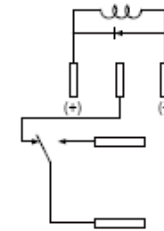
Wiring Diagram for: 75724



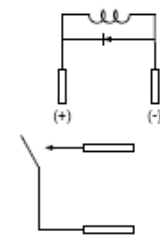
Wiring Diagram for: 75721



Wiring Diagram for: 75725



Wiring Diagram for: 75722



Song Chuan Micro Relays

