

LIVE WIRE



Metal & Nylon Toggle Switches Cole Hersee® - A Littelfuse® Brand

Littelfuse® heavy-duty toggle switches are designed in a variety of configurations/styles to be used in all vehicle and equipment applications. With rust and corrosion resistant screw or male blade terminal contacts, these switches can handle a wide range of environments. The housing of the switch can be nylon, plastic/metal combination or die cast depending on the style of the switch.

- Variety of circuitry and pole options to easily integrate into a number of applications
- Durable and long-lasting
- Illuminated handle on select nylon switches
- Standard and long handle electrical ratings:
 - 25A/12V DC
 - 15A/24V DC
 - 10A/36V DC
- Extra heavy-duty electrical ratings:
 - 30A/12V DC
 - 15A/24-36V DC
- Nylon electrical ratings:
 - 25A/12V DC



Standard Blade
WAYTEK # 43960

Standard Screw
WAYTEK # 43962



Long Handle
WAYTEK# 43974

Extra Heavy-Duty
WAYTEK# 43985



Standard Nylon
WAYTEK # 43986

Illuminated Nylon
WAYTEK # 43993

Standard Heavy-Duty			
Waytek Part #	Type	Contacts	Circuit
43960	SPST	2 - Blades	On-Off
43962	SPST	2 - Screws	On-Off
43964	SPDT	3 - Blades	On-On
43965	DPDT	6 - Blades	On-Off-On
43966	DPDT	6 - Screws	(On)-Off-(On)
43968	SPDT	3 - Screws	On-Off-(On)
43969	SPST	2 - Blades	On-Off
43972	DPDT	6 - Screws	On-On
43973	SPST	2 - Blades	On-(Off)
43975	SPDT	3 - Blades	On-Off-On
43976	DPDT	6 - Blades	On-None-On
43978	DPDT	6 - Screws	On-Off-On
43979	SPDT	3 - Screws	On-None-On
43981	DPST	4 - Blades	On-Off
43982	SPDT	3 - Screws	On-Off-On
43983	DPST	4 - Blades	On-Off
Long Handle Heavy-Duty			
Waytek Part #	Type	Contacts	Circuit
43961	SPST	2 - Blades	On-Off
43963	SPST	2 - Screws	On-Off
43967	DPDT	6 - Screws	(On)-Off-(On)
43974	SPST	2 - Blades	On-(Off)
Extra Heavy-Duty			
Waytek Part #	Type	Contacts	Circuit
43984	SPDT	3 - Blades	On-Off-On
43985	SPST	2 - Screws	On-Off
Standard Nylon Illuminated/Non-Illuminated			
Waytek Part #	Type	Contacts	Circuit
43986	SPST	2 - Screws	On-Off
43988	SPST	2 - Blades	(On)-Off
43989	SPDT	3 - Screws	On-Off-On
43990	SPDT	3 - Screws	(On)-Off-(On)
43991	DPDT	6 - Screws	On-Off-On
43992	DPDT	6 - Blades	On-Off-On
43993*	SPST	4 - Screws	On-Off
43994*	SPST	4 - Blades	On-Off
43995*	SPDT	5 - Screws	On-Off-On

*Illuminated Switch



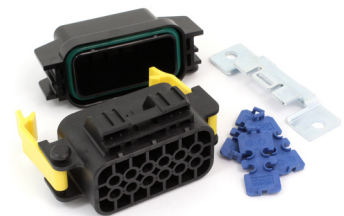
RELATED PRODUCTS



LITTELFUSE®
SMZ Series ZCASE® Fuse Holder
Item #45579



LITTELFUSE®
Sealed HPDM 2 Pole MEGA Fuse Holder
Item #46319



LITTELFUSE®
HWB12 Series Mini PDM
Item #45984

