

LIVE WIRE

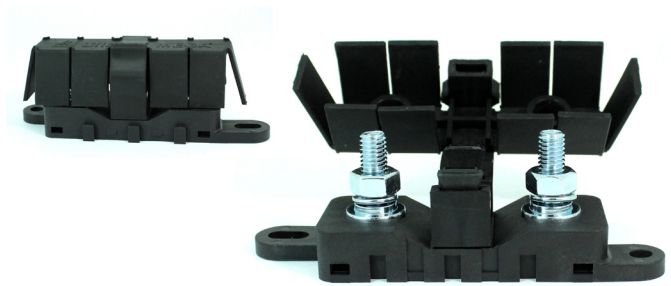
LITTELFUSE® Flex MIDI® & MEGA® Fuse Holders

The Flex MIDI® and Flex MEGA® fuse holders by Littelfuse® are perfect for simplifying your next project. These fuse holders offer a flexible cover which allows cable entry from any direction, use of larger wire sizes, and the ability to easily stack ring terminals. The MIDI fuse holder is available for MIDI bolt-down fuses up to 200A and the MEGA fuse holder houses MEGA bolt-down fuses up to 500A.

- Wire entry from virtually any point, enabled by the flexible cover, aids in quick and easy installation.
- Dovetail feature allows you to interlock multiple Flex holders together creating a high power distribution block.
 - For a high and low amperage solution combine the Flex MIDI and MEGA holders together.
- Slots are molded into the base allowing the holder to be mounted with tie-wraps.
- Long-term corrosion protection ensured by Zinc plated steel hardware and tin-plated 100% pure copper.
- For multiple holder applications utilize the Flex MIDI Bus bars for 2-position (#45611) or 3-position (#45612).



MIDI: [WAYTEK # 45610](#)



MEGA: [WAYTEK # 45616](#)

Waytek Part #	Type	Amps	Volts	Stud Torque	Dimensions
45610	MIDI	200A	32Vdc	3-5.0Nm (#15 Threads)	78.4x29.9x38.3mm
45616	MEGA	500A	32Vdc	12-18Nm (#18 Threads)	121.4x36.8x44.5mm



Expertise Applied | Answers Delivered

RELATED PRODUCTS



WAYTEK
Tinned Copper Eyelet
5/16 Stud
Item #36411



WAYTEK
SGR Battery Cable
Item #SGRI-2-100
Item #SGRI-0-100



DSG - CANUSA
Adhesive Lined Heat Shrink
4:1 Shrink Ratio
Item #22226



WAYTEK